

Sleeve Connectors



C Sleeve or Tap-off Connectors

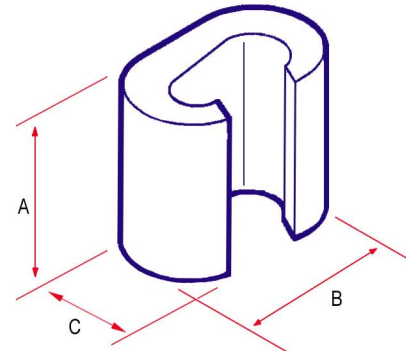
Material: High purity copper

Applications:

- Connecting or tapping-off copper conductors
- Create an earthing network or tapping-off from overhead distribution lines

Suitable for:

- Branch connection
- Parallel/Joint connection
- Joining running conductors



| Part No. | Conductor Size mm ² | | Dimensions mm | | |
|-------------------|--------------------------------|---------------------|---------------|------|------|
| | Run | Tap | A | B | C |
| CSC6 | 6 - 2.5 | 6 - 1.5 | 9.0 | 9.8 | 6.4 |
| CSC10 | 10 | 10 - 1.5 | 12.0 | 12.6 | 8.4 |
| CSC16 | 16 | 16 - 1.5 | 17.0 | 19.4 | 12.0 |
| CSC25-10 | 25 - 16 | 10 - 1.5 | 17.0 | 19.8 | 13.0 |
| CSC25 | 25 | 25 - 16 | 17.0 | 21.4 | 13.0 |
| CSC35-16 | 40 - 35 | 16 - 1.5 | 21.0 | 24.6 | 15.4 |
| CSC35 | 40 - 35 50 | 40 - 2.5 25 - 10 | 21.0 | 26.6 | 15.6 |
| CSC50-25 | 50 | 25 - 4 | 25.0 | 32.9 | 21.0 |
| CSC50 | 50 | 50 - 35 | 26.0 | 33.0 | 21.0 |
| CSC70-25 | 70 - 63 | 25 - 1.5 | 21.0 | 26.4 | 17.5 |
| CSC70-35 | 70 - 50 | 40 - 4 | 28.0 | 33.0 | 21.0 |
| CSC70 | 70 - 50 | 70 - 35 | 28.0 | 34.0 | 21.0 |
| CSC95-35 | 100 - 95 | 40 - 4 | 29.0 | 40.6 | 26.0 |
| CSC95-70 | 100 - 95 | 70 - 40 | 29.0 | 41.0 | 26.0 |
| CSC95 | 100 - 95 | 100 - 63 | 29.0 | 41.0 | 26.0 |
| CSC120 | 125 - 110 | 125 - 25 | 30.0 | 45.0 | 28.0 |
| CSC150-120 | 160 - 150 | 125 - 25 | 31.0 | 45.0 | 28.0 |
| CSC150 | 150 | 150 - 63 | 30.0 | 45.0 | 28.0 |
| CSC185-95 | 185 | 100 - 16 | 31.0 | 45.0 | 28.0 |
| CSC185 | 185 - 120 | 185 - 120 | 22.6 | 68.0 | 34.0 |