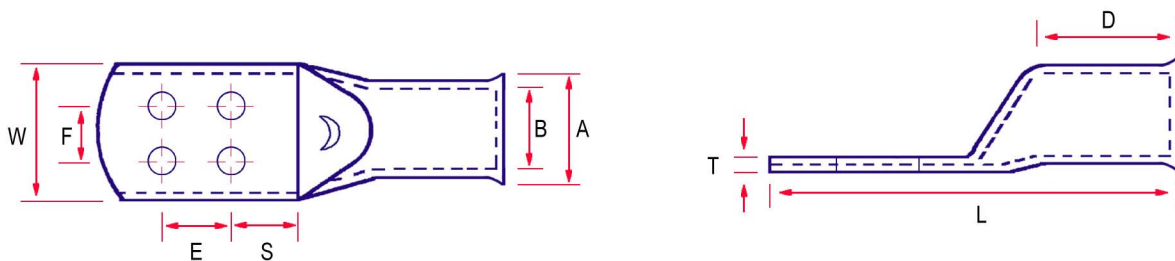


4 Hole Transformer Fixing Terminals



Material: Manufactured from Copper Tube to BS EN 12449:1999

Finish: Electro Tin plated to BS 1872:1974



Part No.		Cable Size mm ²	Dimensions mm									
8mm stud hole	10mm stud hole		A	B	W	E	F	D	L	S	T	
120-4 x 8TQ	120-4 x 10TQ	120	22.0	15.0	56.0	25.0	35.0	34.0	119.0	17.0	4.0	
150-4 x 8TQ	150-4 x 10TQ	150	23.0	16.5	56.0	25.0	35.0	34.0	119.0	17.0	4.5	
185-4 x 8TQ	185-4 x 10TQ	185	24.8	18.5	56.0	25.0	35.0	34.0	119.0	17.0	4.5	
240-4 x 8TQ	240-4 x 10TQ	240	28.0	21.0	56.0	25.0	35.0	34.0	119.0	17.0	5.0	
300-4 x 8TQ	300-4 x 10TQ	300	33.0	23.0	56.0	25.0	35.0	42.0	126.0	17.0	7.0	
400-4 x 8TQ	400-4 x 10TQ	400	36.0	27.0	56.0	25.0	35.0	44.0	126.0	17.0	8.5	
500-4 x 8TQ	500-4 x 10TQ	500	38.0	30.0	56.0	25.0	35.0	65.0	150.0	17.0	8.0	
630-4 x 8TQ	630-4 x 10TQ	630	44.0	34.0	63.0	25.0	35.0	65.0	150.0	17.0	10.0	

For recommended tooling refer to TQ terminals.