

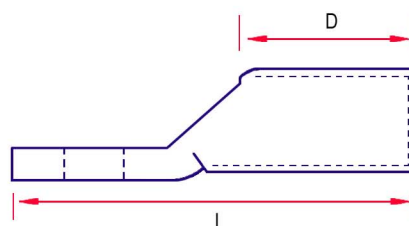
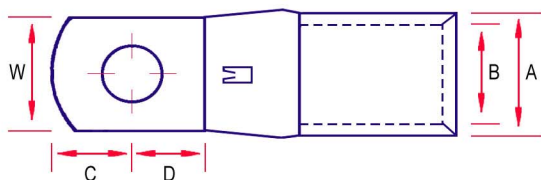


Heavy Duty Terminals With Reduced Palm

Material: Manufactured from Copper Tube to BS EN 12449:1999

Finish: Electro Tin plated to BS 1872:1974

Application: For L.V. circuit breakers with reduced space terminal blocks for immediate and easier installation.



Part No.	Cond. Size mm ²	Stud Hole	Dimensions mm					
			A	B	C	D	W	L
10-5TRP	10	M5	6.9	4.5	6.0	6.5	9.0	26.0
16-5TRP	16	M5	7.9	5.6	6.0	6.5	9.0	29.0
25-5TRP	25	M5	9.5	7.0	6.0	6.5	9.0	31.5
35-6TRP	35	M6	11.0	8.2	7.0	8.0	11.5	36.5
50-6TRP	50	M6	12.1	9.5	7.0	8.0	11.5	40.5
70-6TRP	70	M6	15.0	11.5	7.0	8.0	11.5	44.0
95-8TRP	95	M8	17.0	13.5	8.0	9.0	15.5	52.5
120-8TRP	120	M8	19.0	15.0	9.0	14.0	19.0	60.0
120-10TRP	120	M10	19.0	15.0	9.0	14.0	19.0	60.0
150-8TRP	150	M8	21.0	16.5	9.0	18.0	19.0	70.0
150-10TRP	150	M10	21.0	16.5	9.0	18.0	19.0	70.0
185-10TRP	185	M10	23.0	18.5	9.0	18.0	24.5	77.0
240-10TRP	240	M10	26.0	21.0	9.0	13.0	31.0	80.0
240-12TRP	240	M12	26.0	21.0	12.0	16.0	31.0	86.0
240-16TRP	240	M16	26.0	21.0	17.0	19.0	31.0	94.0
300-12TRP	300	M12	28.0	23.0	12.0	16.0	31.0	95.0

For recommended tooling refer to TQ terminals.