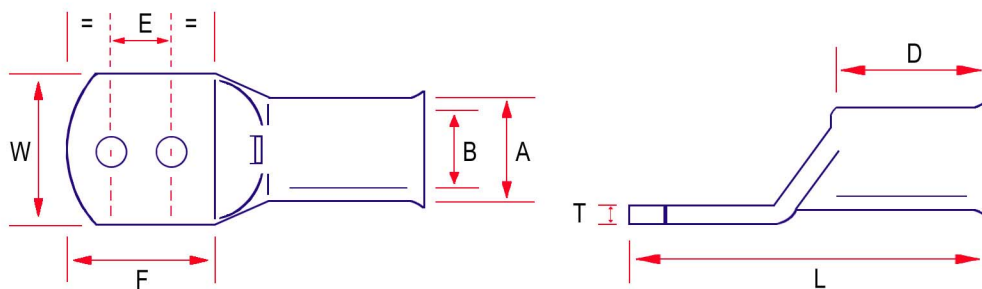


Extended Palm 2 Hole Terminals



Material: Manufactured from Copper Tube to BS EN 12449:1999

Finish: Bright Electro Tin to BS 1872:1974



Part No.	Cond. Size mm ²	Stud Hole	Dimensions mm							
			A	B	W	E	F	D	L	T
10-6POI	10	6	6.9	4.6	11.0	16.0	34.0	10.0	50.0	2.0
16-6POI	16	6	8.0	5.6	11.0	16.0	34.0	11.0	52.0	2.2
25-6POI	25	6	9.5	7.0	13.5	16.0	34.0	13.0	56.0	2.4
35-6POI	35	6	11.0	8.2	15.5	16.0	34.0	18.0	57.0	2.8
50-6POI	50	6	11.9	9.5	17.0	45.0	75.0	18.0	83.0	2.5
70-12POI	70	12.5	15.0	11.5	21.2	45.0	75.0	18.0	105.0	2.0
95-12POI	95	12.5	17.0	13.5	24.3	45.0	75.0	24.0	111.0	3.5
120-12POI	120	12.5	19.0	15.0	27.2	45.0	75.0	27.0	115.0	4.0
150-12POI	150	12.5	21.0	16.5	30.0	45.0	75.0	27.0	120.0	4.5
185-12POI	185	12.5	23.0	18.5	33.5	45.0	75.0	30.0	125.0	4.5
240-12POI	240	12.5	26.0	21.0	37.7	45.0	75.0	32.0	128.0	5.0
300-12POI	300	12.5	28.0	23.0	41.0	45.0	75.0	37.0	137.0	5.0
400-12POI	400	12.5	32.0	27.0	47.3	45.0	75.0	38.0	138.0	5.0
500-12POI	500	12.5	38.0	30.0	55.0	45.0	75.0	50.0	160.0	8.2
630-12POI	630	12.5	44.0	33.8	63.0	45.0	75.0	50.0	164.0	10.2

Alternative stud hole sizes, hole centres, and blank palms are available to special order.

For recommended tooling refer to TQ terminals.