

Copper Tube Splices



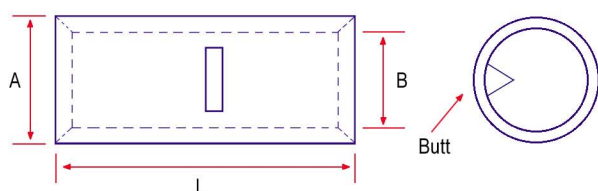
Butt Splices

Parallel Splices

Butt Splices

Material: Manufactured from Copper Tube to BS EN 12449:1999

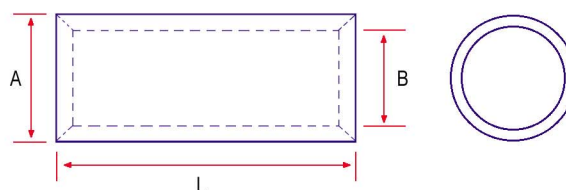
Finish: Bright Electro Tin to BS 1872:1974



Parallel Splices

Material: Manufactured from Copper Tube to BS EN 12449:1999

Finish: Electro Tin Plated to BS 1872:1974



Part No.	Cond. Size mm ²	Dimensions mm		
		A	B	L
1.5BS	1.5	3.3	1.8	14.0
2.5BS	2.5	4.2	2.3	16.0
4BS	4.0	5.0	3.0	19.0
6BS	6.0	6.0	4.0	22.0
10BS	10	6.9	4.4	25.0
16BS	16	8.0	5.6	30.0
25BS	25	9.5	7.0	35.0
35BS	35	11.0	8.2	39.0
50BS	50	12.1	9.5	44.0
70BS	70	15.0	11.5	44.0
95BS	95	17.0	13.5	55.0
120BS	120	19.0	15.0	63.0
150BS	150	21.0	16.5	66.0
185BS	185	23.0	18.5	74.0
240BS	240	26.0	21.0	80.0
300BS	300	28.0	23.0	89.0
400BS	400	32.0	27.0	90.0
500BS	500	38.1	30.0	135.0
630BS	630	44.0	33.8	135.0
800BS	800	49.0	38.0	135.0
1000BS	1000	53.0	42.5	135.0

For recommended tooling refer to TQ terminals.

Part No.	Cond. Size mm ²	Dimensions mm		
		A	B	L
10PS	10	6.9	4.4	11.0
16PS	16	8.0	5.6	14.0
25PS	25	9.5	7.0	16.0
35PS	35	11.0	8.2	18.0
50PS	50	12.1	9.5	21.0
70PS	70	15.0	11.5	21.0

For recommended tooling refer to TQ terminals.