

# Copper Pin Terminals



## Un-insulated Solid Copper Pin

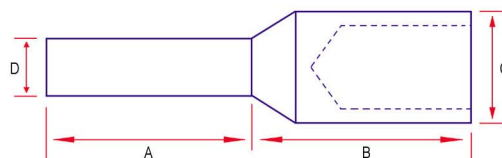
## Un-insulated Reducing Pin Terminal

### Un-insulated Solid Copper Pin

**Material:** Electrolytic Copper

**Finish:** Electro-Tin Plated

Part No.	Cond. Size mm <sup>2</sup>	Dimensions mm			
		A	B	C	D
10USP	10	10	13	6.2	3.8
16USP	16	13	17	7.1	3.8
25USP	25	20	17	9.0	5.0
35USP	35	20	17	10.6	5.0
50USP	50	20	21	12.4	7.5
70USP	70	20	23	14.7	8.0
95USP	95	20	26	17.5	8.0
120USP	120	25	25	19.4	11.5
150USP	150	32	32	21.5	11.5
185USP	185	32	32	24.0	11.5
240USP	240	32	32	27.3	15.6
300USP	300	32	32	30.6	15.6



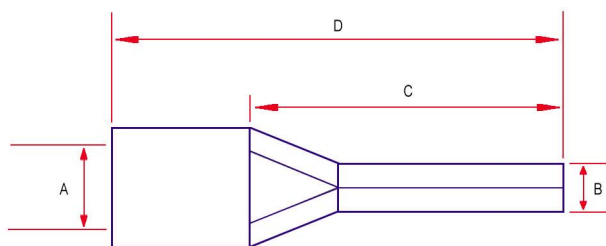
Alternative pin lengths/diameters are available to special order.

### Un-insulated Reducing Pin Terminal

**Material:** Electrolytic Copper

**Finish:** Electro-Tin Plated

Part No.	Cond. Size mm <sup>2</sup>	Dimensions mm			
		A	B	C	D
10UP	10	4.8	4.3	14.5	23.5
16UP	16	5.9	5.5	18.0	28.0
25UP	25	7.0	7.0	20.3	32.0
35UP	35	8.9	8.0	24.5	39.0
50UP	50	10.0	9.5	26.0	45.0
70UP	70	11.5	11.0	31.0	55.0



See Tooling - Crimping Tools for Un-insulated Terminals/Large Hand Crimp Tools.

**Note:** UP Pins should only be crimped using an indent-style tool.

