

Cable Drum Rotators

Cable Dispenser

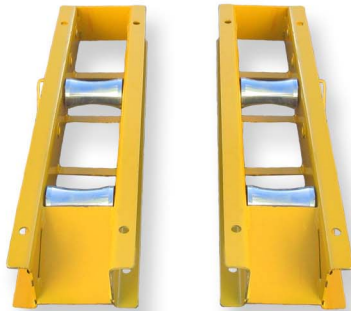
Cable Drum Rotators

CDR 2

Type: All steel welded

Finish: Painted

Rollers: 1 Fixed, 1 Adjustable and fitted sealed ball bearing



CDR 3

Rollers: 2 Adjustable, Fitted sealed ball bearing



Part No.	Drum Weight Max. (kg)	Drum Dia. Max. (mm)	Drum Dia. Min. (mm)	Drum Width	Length (mm)	Width (mm)	Height (mm)	Weight (kg)
CDR 2	1500	2400	300	Adjustable	1000	260	120	54/pair
CDR 3	140	520	120	n/a	650	680	110	11.5

Cable Dispenser



Part No.	Unit Dimensions-closed(mm)			Unit Dimensions-open(mm)			Max. Carry Weight (kg)	Distance between arms (mm)	Weight of Unit (kg)
	Width	Height	Length	Width	Height	Length			
CDD1	40	380	760	340	340	760	50	610	2.8